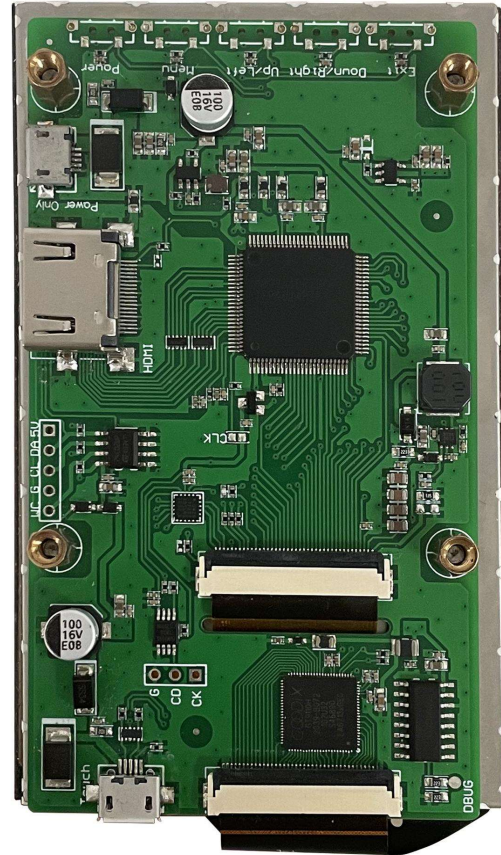


AFYH043AV21

4.3 Inch, 480xRGBx800, 16.7M Colors, IPS screen, CTP



Record of Revision

Ver	Revise Date	Content	Editor
00	2022-12-15	First Edition	Kaya

- **Display**

Item	Parameter	Description
Color	16.7M(16777216)colors	24 bit color 8R8G8B
Panel Type	IPS	IPS process TFT LCM ,wide viewing angle
Viewing Angle	85/85/85/85 (L/R/U/D)	Best View: symmetrical
Active Area (A.A.)	93.6mm (W) × 56.2mm (H)	480x800
View Area (V.A.)	94.0mm (W) × 56.6mm (H)	480x800
Resolution	480x800	Support 0°/90°/180°/270°rotated display
Backlight	LED	>10000 hours (Time of the brightness decaying to 50% on the condition of continuous working with the maximum brightness)
Brightness	250nit	-

Note:You can use dynamic screen saver wallpapers to avoid afterimages caused by fixed page display for a long time.

- **Voltage & Current**

Item	Conditions	Min	Typ	Max	Unit
Power Voltage	-	3.6	5.0	6.0	V
Operation Current	VCC = +5V, Backlight on	-	-	-	mA
	VCC = +5V, Backlight off	-	-	-	mA

Recommended power supply: 5V 1A DC

- **Reliability Test**

Item	Conditions	Min	Typ	Max	Unit
Working Temperature	60%RH at 5V voltage	-20	25	70	°C
Storage Temperature	-	-30	25	80	°C
Working Humidity	25°C	10%	60%	90%	RH
Protective Paint	-	-	None	-	-

- **Interface**

Item	Description
Socket	HDMI interface
USB Interface	Yes
SD Card Slot	None

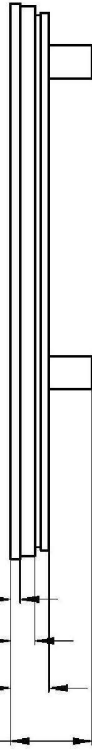
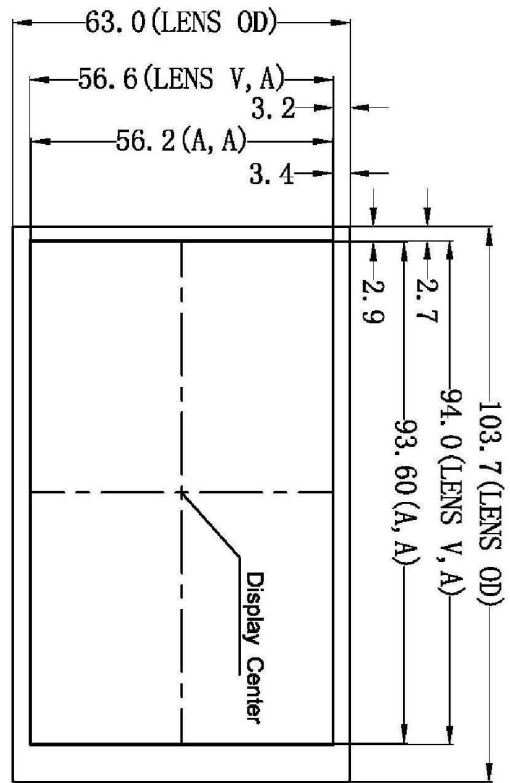
- **Peripheral**

Peripheral	
Peripheral	Capacitance touch panel

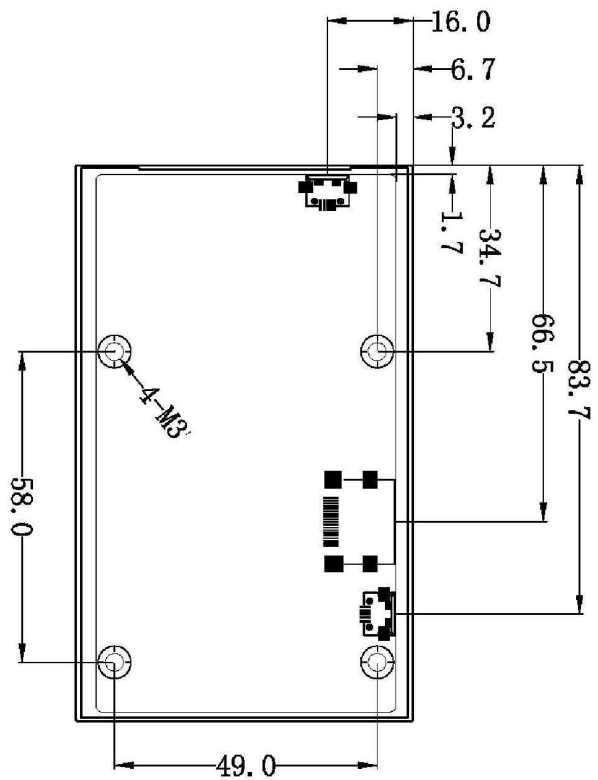
● **Packing Capacity & Dimension**

Dimension				
Dimension	103.7(W)×63.0(H)×15.20(T)mm			
Net Weight	90g			
Packing Capacity				
Model	Size	Layer	Quantity/Layer	Quantity(Pcs)
Carton1:	220mm(L)×160mm(W)×47mm (H)	1	2	2
Carton2:	250mm(L)×200mm(W)×80mm (H)	2	2	4
Carton3:	320mm(L)×270mm(W)×80mm (H)	2	4	8
Carton4:	450mm(L)×350mm(W)×300mm(H)	2	30	60
Carton5:	600mm(L)×450mm(W)×300mm(H)	2	60	120

Disclaimer: The product design is subject to alternation and improvement without prior notice.



PIN name	Pin description	PIN name	Pin description
Ph1	TMS Data2+	Ph11	TMS Clock Shield
Ph2	TMS Data2 Shield	Ph12	TMS Clock-
Ph3	TMS Data2-	Ph13	GEC
Ph4	TMS Data1+	Ph14	HEC Data-Optional/JMI1 (with Ethernet)
Ph5	TMS Data1 Shield	Ph15	SIL/GEC Serial Clock for JMI3
Ph6	TMS Data1-	Ph16	SOMCET Serial Data Line for JMI3
Ph7	TMS Data1+	Ph17	JMI3/CEC/HEC Ground
Ph8	TMS Data1 Shield	Ph18	+5V Power/Vaux (50mA)
Ph9	TMS Data1-	Ph19	Hot Plug Detect/MI3 version/Standard HEC Data1+ (Optional/JMI1/MI1+with Ethernet)
Ph10	TMS Clock+		



Location hole is used as position reference.
 Unmarked Tolerance is +/-0.3mm
 Active area is marked in Dash lines

Model		AFYH043AV21	
Drawing	A 4	Drawn	J.G
Scale	1:1	Reviewer	
Unit	MM	Approval	
Date		Date	
Date		Date	