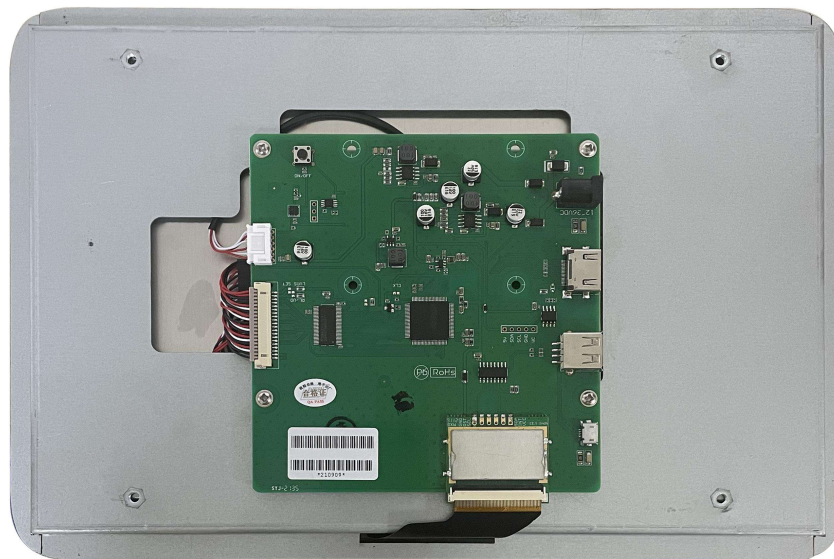


# AFYH121AV21

12.1 Inch, 1280xRGBx800, 16.7M Colors, TN screen, CTP



## Record of Revision

Ver	Revise Date	Content	Editor
00	2022-12-22	First Edition	Kaya

● **Display**

Item	Parameter	Description
Color	16.7M(16777216)colors	24 bit color 8R8G8B
Panel Type	TN	TN TFT LCM,normal viewing angle
Viewing Angle	70/70/50/70(L/R/U/D)	-
Active Area (A.A.)	261.12mm(W)x163.20mm(H)	1280×800
View Area (V.A.)	262.7mm(W)x164.8mm(H)	1280×800
Resolution	1280×800	Support 0°/90°/180°/270°rotated display
Backlight	LED	≥30000H (Continuous working with maximum brightness,time of the brightness decays to 50%)
Brightness	300nit	-

Note:You can use dynamic screen saver wallpapers to avoid afterimages caused by fixed page display for a long time.

● **Voltage & Current**

Item	Conditions	Min	Typ	Max	Unit
Power Voltage	-	12.0	12.0	36.0	V
Operation Current	VCC = +12V Backlight on		660		mA
	VCC = +12V Backlight off		-		

Recommended power supply: 12V 1A DC

● **Reliability Test**

Item	Conditions	Min	Typ	Max	Unit
Working Temperature	60%RH at 12V voltage	-30	25	80	°C
Storage Temperature	-	-30	25	80	°C
Working Humidity	25°C	10%	60%	90%	RH

● **Interface**

Item	Description
Socket	Power interface, HDMI interface
USB Interface	Yes
SD Card Slot	None

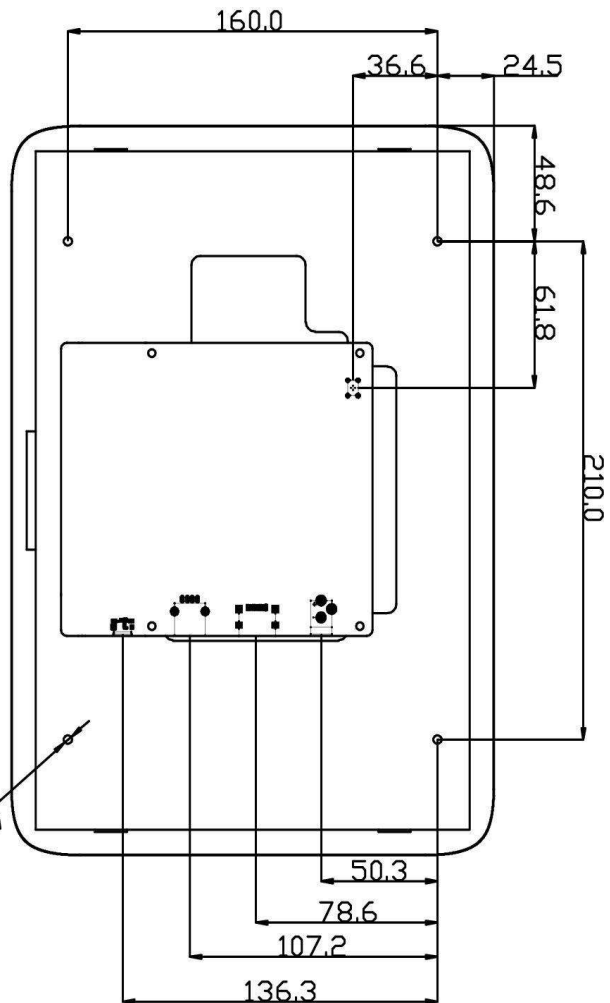
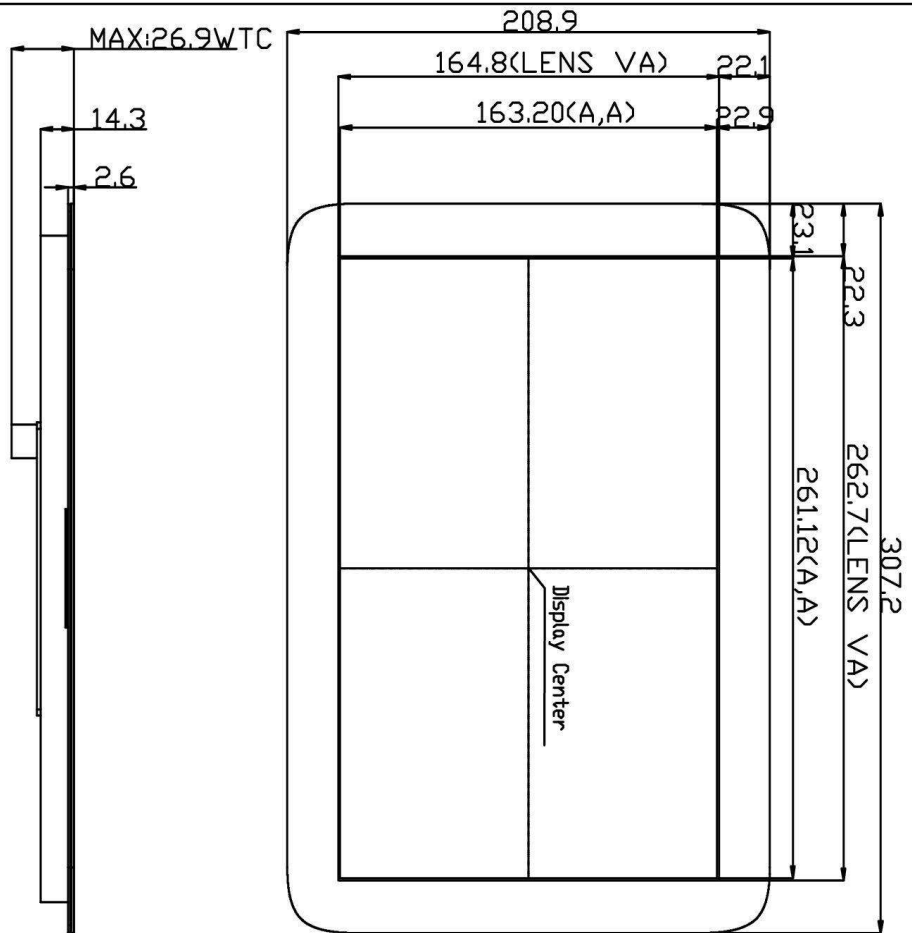
- **Peripheral**

<b>Peripheral</b>	Capacitive touch panel
-------------------	------------------------

- **Packing Capacity & Dimension**

<b>Dimension</b>				
<b>Dimension</b>	307.2(W)x208.9(H)x26.9(T)mm			
<b>Net Weight</b>	1654g			
<b>Packing Capacity</b>				
<b>Model</b>	<b>Size</b>	<b>Layer</b>	<b>Quantity/Layer</b>	<b>Quantity(Pcs)</b>
<b>Carton1:</b>	220mm(L)x160mm(W)x47mm (H)	-	-	-
<b>Carton2:</b>	250mm(L)x200mm(W)x80mm (H)	-	-	-
<b>Carton3:</b>	320mm(L)x270mm(W)x80mm (H)	2	1	2
<b>Carton4:</b>	450mm(L)x350mm(W)x300mm(H)	1	10	10
<b>Carton5:</b>	600mm(L)x450mm(W)x300mm(H)	1	16	16

Disclaimer: The product design is subject to alternation and improvement without prior notice.



1 Location hole is used as position reference.  
 2 Unmarked Tolerance is +/-0.3mm  
 Active area is marked in Dash lines

Definition	Pin#	Type	Description
GND	8,9,10	P	GND
TX4	7	O	Output
TX2	6	O	Output
RX2	5	I	Input
RX4	4	I	Input
+5V	1,2,3	P	Power Input

Model		AFYH121AV21			
Drawing	A 4	Drawn	JG	Date	2020/08/28
Scale		Review		Date	
Unit	MM	Approval		Date	

