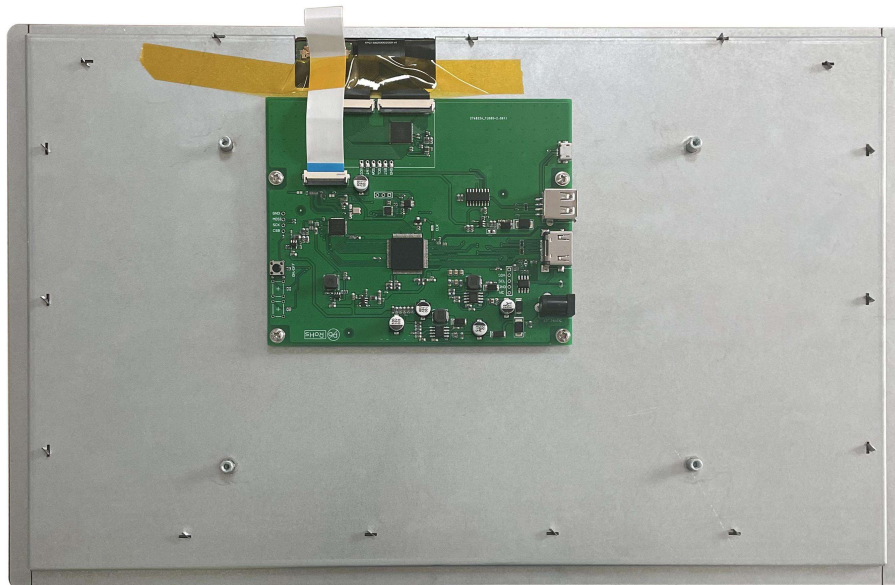


# AFYH156AV21

15.6 Inch, 1920xRGBx1080, 16.7M Colors, IPS screen, CTP



## Record of Revision

Ver	Revise Date	Content	Editor
00	2022-12-21	First Edition	Kaya

## ● Display

Item	Parameter	Description
Color	16.7M(16777216)colors	24 bit color 8R8G8B
Panel Type	IPS	High contrast,good color reproduction,wide viewing angle(typical value is 85/85/85/85)
Viewing Angle	85/85/85/85(L/R/U/D)	-
Active Area (A.A.)	343.16mm(W) ×192.6mm(H)	1920x1080
View Area (V.A.)	342.16mm(W) ×191.59mm(H)	1920x1080
Resolution	1920x1080	Support 0°/90°/180°/270°rotated display
Backlight	LED	≥20000H (Continuous working with maximum brightness, time of the brightness decays to 50%)
Brightness	250nit	100 levels adjustment.(It's not recommend to set brightness to 1%~30% of the maximum,which may lead LCD flicker)

Note: You can use dynamic screen saver wallpapers to avoid afterimages caused by fixed page display for a long time.

## ● Voltage & Current

Item	Conditions	Min	Typ	Max	Unit
Power Voltage	-	12	12	36	V
Current parameters	-	-	420	-	mA

Recommended power supply: 12V 1A DC

## ● Reliability Test

Item	Conditions	Min	Typ	Max	Unit
Working Temperature	60%RH at 12V voltage	0	25	50	℃
Storage Temperature	-	-20	25	60	℃
Working Humidity	25℃	10%	60%	90%	RH

## ● Interface

Item	Description
Socket	Power interface, HDMI interface
USB Interface	Yes
SD Card Slot	None

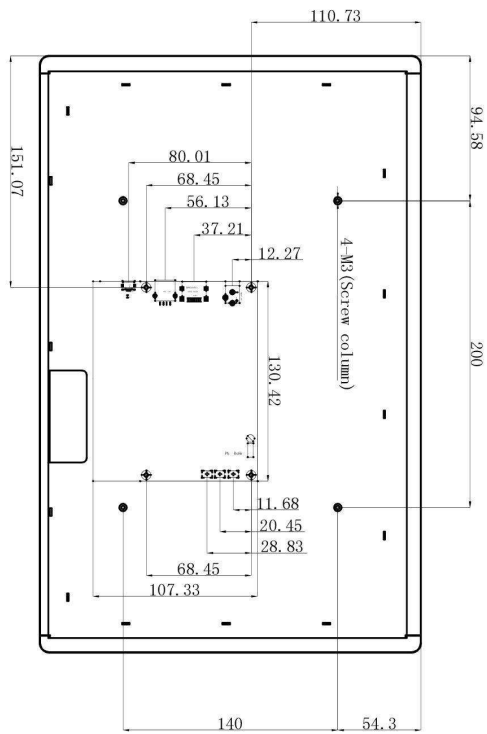
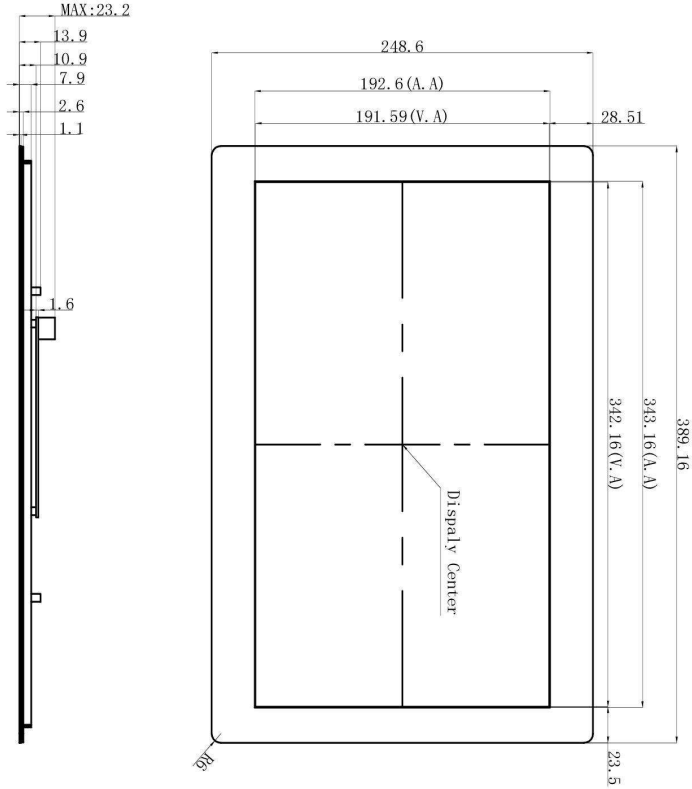
## ● Peripheral

Peripheral	Capacitive touch panel
------------	------------------------

## ● Packing Capacity & Dimension

Dimension				
Dimension	389.16(W)×248.6(H)×23.2(T)mm			
Net Weight	1660g			
Packing Capacity				
Model	Size	Layer	Quantity/Layer	Quantity(Pcs)
Carton1:	525mm(L)×330mm(W)×80mm(H)	1	1	1
Carton2:	570mm(L)×340mm(W)×385mm(H)	1	5	5

Disclaimer: The product design is subject to alternation and improvement without prior notice.



Item Name	Item Description	Item Name	Item Description
Pin1	TMS Base+	Pin11	TMS Clock Shield
Pin2	TMS Base+ Shield	Pin12	TMS Clock-
Pin3	TMS Base-	Pin13	GND
Pin4	TMS Base+	Pin14	HBC Base- (Optional, I2C 1, 4+1th Ethernet)
Pin5	TMS Base+ Shield	Pin15	SD (I2C Serial Clock for IMC)
Pin6	TMS Base-	Pin16	SM (I2C Serial Data Line for IMC)
Pin7	TMS Base+	Pin17	DDC (I2C/HBC Ground)
Pin8	TMS Base+ Shield	Pin18	+5V Power (aux Shield)
Pin9	TMS Base-	Pin19	HBC Base+ (Optional, I2C 1, 4+1th Ethernet)
Pin10	TMS Clock+		(Optional, I2C 1, 4+1th Ethernet)

Model	AFYH156AV21				
Drawing	A 4	Drawn	G. Y	Date	2021.07.19
Scale	1 : 1	Review		Date	
Unit	MM	Approval		Date	



1. Location hole is used as position reference.  
 2. Unmarked Tolerance is +/-0.3mm  
 Active area is marked in Dash lines